

### Package Contents:

- One CitiDISK HDV unit
- One 1.5 meter in length 6-pin to 4-pin iLink cable for camcorder
- One CD containing programs, drivers, manual and user guide
- One universal 100 to 240 volt AC input, +12 volt DC output Wall-mount power adapter with reverse polarity plug
- One belt-clip configured carrying pouch
- One Quick Usage Guide (this document)



### Limited Warranty

The manufacturer guarantees that every CitiDISK HDV including the kit but not the batteries embedded inside the enclosure (hard disk drive warranty policy is exclusive and is warranted by its manufacturers) will be free from physical defects in material and workmanship under normal use for one (1) year from the date of purchase. This warranty does not cover any problem that is caused by commercial use; accident; abuse; neglect; shock; electrostatic discharge; heat or humidity; improper installation; operation; maintenance or modification; any product with removed, damaged or tampered labels; unauthorized opening of the enclosure; malfunctions caused by other equipment; or any misuse contrary to the instructions in the Quick Usage Guide. This warranty does not cover data loss – *back-up the contents of your drive to a second storage device on a regular basis*. Also, consequential damages; incidental damages; and costs related to data recovery, removal, and installations are not recoverable under this warranty. If the product proves defective during this warranty period, contact your manufacturer's customer support in order to obtain a Return Material Authorization Number. By sending product for replacement to Shining, you agree to transfer the ownership of the original product to Shining. Shining may choose not to return your original drive to you. You must backup the data before sending the unit to Shining. Data recovery is not covered under this warranty and is not part of the repair or exchange process.

# CitiDISK HDV

## Quick Usage Guide



### FW1256H

It is highly recommended that you read the complete CitiDISK Installation/Usage Manual and Utility Suite Manual before using this product to help ensure that you get the most out of your CitiDISK HDV.

#### **Copyright Disclaimer**

All of the companies and product names mentioned in this user guide are the registered trademarks of their owners. All of the information in this user guide is subject to change without notice.



Do not drop, jar, bump, shock the unit, or expose to sources of excessive vibration. Keep in mind that CitiDISK HDV uses a 2.5" hard drive, which is similar to those used in laptops. Gently handle and carry your CitiDISK HDV, especially during video recording. If the battery is not fully charged, charge it for at least 4 hours before USING CITIDISK ONLY ON BATTERY POWER.

## Buttons, Connectors, Switch & Status Lights

**Note:** The following illustration describes each of the buttons of the CitiDISK HDV (FW1256H). These three buttons serve as status **LIGHTS** as well.

### POWER Button and Status Light:

Solid **GREEN**: unit is on  
Blinking **GREEN**: 5 minutes left in the internal battery

### External Power In Connector:

Accepts +6V to +18V DC power input.

Automatically switches off and charges internal battery when plugged in

### QPlay Button & Status Light:

Solid **ORANGE**: Playing last captured clip

### PlayAll Button and Status Light:

Blinking **ORANGE**: Playing all captured clips from last scene forward or backward

### RECORD Button & Status Light:

Solid **RED**: Recording  
Blinking **RED**: 5 minutes left in recording capacity or not connected

### Internal Battery Status Light:

G: between 50% and 100%  
O: between **20% and 50%**  
R: below 20%

### FireWire Connector:

Connects to camera or computer

### Quick Erase Button:

Quickly erases all files in the "Media" folder

### HDD Low:

Solid **RED** when hard disk recording capacity is below 50%

### Internal Battery Charging Light:

Bright **BLUE**: Charging  
Dim **BLUE**: Charging almost complete  
Off: Charge complete or disk accessing

### Battery and Main switch:

On: PWR button is enabled  
Off: PWR button is disabled



## Technical Tips

**Q:** Does CitiDISK HDV support DVCProHD? What are the differences?

**A:** No. CitiDISK HDV supports DV and HDV.

	Encoder	Data Rate	Hi-Def's
<b>DV</b>	<b>DV</b>	<b>25 Mbps</b>	<b>NO</b>
DVCPro50	DV	50 Mbps	NO
DVCPro HD	DV	100 Mbps	YES
<b>HDV</b>	<b>MPEG2</b>	<b>~20 Mbps</b>	<b>YES</b>

Although the FAQ's for the CitiDISK DV and HD may not all applicable to the CitiDISK HDV, but some are. It is also recommended to browse through its own FAQ page.

**Q:** What are recording modes supported by CitiDISK HDV? Is there a different version for PAL?

**A:** The CitiDISK HDV supports all of the recording modes from HDV camera including 1080i & 720p for HDV. No, there is not a different version for PAL.

**Q:** Does CitiDISK HDV support QuickTime-HDV format? What is the native video file format supported by the CitiDISK HDV?

**A:** No, as the time of this usage guide release. However, the CitiDISK HDV does support multiple file formats. Details can be found in page 10 "Choosing Favorable DV File Format" section and page 11 "DV Streams versus Editing Software".

**Q:** What to prevent rendering clips in Final Cut Pro?

**A:** Set CitiDISK HDV as "MOV" file format if DV.

**Q:** Is "DV Control" recording function enabled?

**A:** Yes if a non-blank tape is inserted

**Q:** Is this an error when all three lights blinking?

No. This means the CitiDISK HDV is waiting to be connected to computer or camera.

**Q:** Is stopping the recording needed while swapping in & out the external battery?

**A:** No. The external battery is hot swappable, also the internal battery automatically kicks in when the external battery runs low.

**Q:** Is there a correct power on/off and start recording sequences?

**A:** Yes. Due to both camera and the CitiDISK HDV include operational battery; each unit's ground potential may not be the same when connecting each other. Always connect them when both units of are powered off. Details can be found in page 6.

The last thing to do is creating the necessary folder/file objects required for the CitiDISK HDV to work on.

- 1) Create a folder named as "Movie" at the root of CitiDISK HDV volume.
- 2) Create another folder named "Media" and place it inside the "Movie" folder.
- 3) Create a plain text file named "Project.txt" and place it inside the "Movie" folder as well. Above three items are the signature objects required by the CitiDISK unit to operate, must not be removed.

## Technical Support

### 1). Web support

For answers to warranty, please consult this Quick Usage Guide page 20 and common questions, see <http://www.shining.com/support/fag/3.shtm>.

### 2). Email support

Send questions to [techsupport@shining.com](mailto:techsupport@shining.com).

### 3). FAX support

To send technical support questions to Shining via fax have your FAX machine dial +1-714-761-9624.

Technical Specifications	
Interface	One IEEE1394A port SBP-2 and Isochronous DV & HDV video streams
Cable	One 6pin-4pin IEEE1394A standard included
Sustained Transfer Rate	16 MBytes/second
Internal Battery	Rechargeable, Lithium based battery good for up to 90 minutes of non-stop recording
External Power	+6V to +18V DC in
Operating Temperature	0 to 55 Centigrade
Relative Humidity	95% Maximum
Storage Temperature	-22 to 65 Centigrade
Dimension	Width: 77mm Length: 135mm Height: 24mm
Weight	10 ounces
HD Recording Capacity	FW1256H-80(DV or HDV) > 360 minutes FW1256H-100(DV or HDV) > 450 minutes FW1256H-120(DV or HDV) > 540 minutes FW1256H-160(DV or HDV) > 630 minutes

**PLEASE follow the operating steps recommended below to avoid incomplete video capture. Each step is further explained in each referenced page.**

1. Charging the unit's internal battery – page 6
2. Choose the preferred native DV Video file format – page 10
3. Turn on the internal battery switch – page 6
4. Setup the CitiDISK HDV & camera before capturing – page 4, 5
5. Power on the camera first, set the "camera" mode for capturing live video or set "VCR" mode for capturing tape video; select the FireWire signal type (the signal can be DV or down converting HDV->DV, or HDV)
6. Power on the CitiDISK HDV unit – page 6
7. Capturing live video:  
Start the recording by pressing the camera's "REC" button once; or, manually pressing "REC" button on the CitiDISK HDV once.  
Stop the recording by pressing camera's "REC" button once; or, manually pressing "REC" button on the CitiDISK HDV once – page 7  
Capturing tape video:  
Play the tape first, manually pressing "REC" button on the CitiDISK HDV once – page 7  
Stop the recording manually by pressing "REC" button on the CitiDISK HDV unit once – page 7  
Note: Must turn off the CitiDISK HDV unit and start from step 5 if changing FireWire signal type is preferred (**e.g. from DV->HDV or vice versa**)
8. "QPlay" the last captured scene or play all scenes after you have completed shooting – page 9
9. Power off the CitiDISK HDV first, the camera second – page 6
10. Connect to computer, copy all of the clips in "Media" folder to the internal hard disk of PC/Mac before editing – page 8
11. Re-format the CitiDISK HDV or re-connect the CitiDISK HDV to the camcorder and "QuickErase" all of the captured clips to re-claim the free disk space for next usage – page 16, 17
12. Repeat STEPS 1 to 11 consistently for every video shoot

Note: Pages 12-15 describe steps for "Updating the CitiDISK HDV firmware," which is only necessary at certain times. Customers are urged to download the latest firmware Uploader and verify the unit's firmware install date, whether or not it is earlier than the one posted on SHINING's website. If so, identify the firmware for your model and read through the document first before updating the firmware.

## Mounting on the Hot-shoe

- Insert the CitiDISK HDV to the Hot-shoe adapter( sold separately ) and secure the unit it on hot-shoe.
- Insert the external battery to the Battery holder( sold separately ) and secure it with the returned shoe-bracket.
- Plug in the 4-pin FireWire connector into the camcorder iLink port.
- Tighten the FireWire cable with handle by cable-tie.



## Attaching the Unit Across Belt



- Close both unit and external battery compartments.
- Connect the FireWire cable through the opening of top transparent plastic.
- Connect the external battery power cable to the unit's external power input socket.
- Run the flap across belt and tighten it up.



## Mounting Between Camera and G-/V-Mount Battery with Pocket Adapter

- Slide the CitiDISK HDV into the PCKT1256-V, -G pocket adapter (sold separately).
- Sandwich the pocket adapter with the unit in between the camera's back and the battery.
- Connect the D-Tap power cord between unit's external power input and one of the D-Tap receptacles.



## Re-formatting the CitiDISK HDV( Mac 10.x )


Connect the CitiDISK HDV to a MacX system. Find the "Disk Utility" and launch it.



Select the drive listing "Shining," click on the "Erase" function on top menu bar, and also select "MS-DOS File System" in "Volume Format." Click on "Erase" at the bottom of the menu to continue.

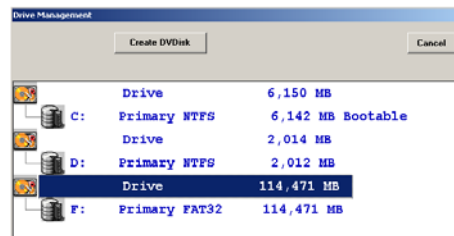
Note: HFSPlus+ is not supported for the purpose of cross-platform; user must select "MS-DOS File System" in "Volume Format" selection.

## Re-formatting the CitiDISK HDV( PC/XP )

Install the Shining Utility Suite first, find the  icon on the desktop and double-click it to launch the utility.



Select the "Hard Drive Setup" function at the center of the palette. Select "YES" to create a "DV Disk."



Select the target drive, e.g. "F" drives, next click on "Create DV Disk" function to start the process. System will show "deleting current partition" and "erasing data on drive" messages while actions will be performed. Select "YES" to continue. Next, system will prompt "Waiting for Windows to assign a drive letter" and "Partitioning and formatting disk drive" messages. The whole process may take several minutes. Next, you should see a message indicating the partitioning and formatting processes are completed. Click on "OK" to continue. The newly re-formatted "DV Disk" already have "Movie" folder, "Media" folder & "Project" text file in the "Movie" folder is ready to shoot the video; you can "Safely Remove" the CitiDISK HDV now.

Note: NTFS is not supported for the purpose of cross-platform; user must use Shining Utility Suite and select "DV Disk" in order to capture video.

## Mounting in Between Camera and Tripod

- Place the PCKT1256-TRPD kit( sold separately ) underneath the camera; tighten the screw to the camera's tripod screw hole.
- Insert the CitiDISK HDV to the PCKT1256-TRPD's compartment.
- Insert the external battery to the battery compartment.



- Connect the battery power cable to the CitiDISK HDV's external power input socket.
- Plug in the 4-pin FireWire connector into the camcorder iLink port.
- Secure the quick-release plate underneath the PCKT1256-TRPD kit.
- Move around, shooting video with camera, PCKT1256-TRPD and the CitiDISK HDV set as one piece of equipment.
- Or, set the whole setup on the tripod for stationary shooting.



## Charging the Internal Battery

- Apply the wall-mount power adapter to the external power input socket or connect the FireWire cable to an active computer's FireWire port.
- The **BLUE** charging light turned on, when the battery is nearly empty, the charging current is the highest and the BLUE light is the brightest. Eventually the **BLUE** light dims out and off if full. The charging time could take up to 6 hours.
- You can only use the external power source to either charge the unit or to operate the unit.

Note: The internal re-chargeable battery is made of hard Lithium Polymer material.



## Turning On/Off Internal Battery

- **Turning on the battery:**  
Slide the main switch to ON position. Without doing so the CitiDISK HDV will not operate.
- **Turning off the battery:**  
Slide the main switch to OFF position while in storage or in transit so as not to drain the battery when it's not in use.



## Powering On/Off the CitiDISK HDV

- **Power on:**  
Toggle the "PWR" button once. If the CitiDISK HDV is not connected to camera neither the computer, all three lights will flash. If connecting to the camera, the unit will synchronize itself to the camera; the whole process could take up to 20 seconds for large capacity models. When the unit is ready to operate, the "**GREEN**" light turns on and stays solid.
- **Auto powering off:**  
When the internal battery has less than 5 minutes of power capacity remaining, this "**GREEN**" light blinks first, next to stop recording and to shut off the unit.
- **Power off:**  
Toggle the "PWR" button once. The "**GREEN**" light turns off.



The "**Capture format**" column displays the current captured format. For example, "QuickTime" MOV is the format selected. User is able to change it by clicking on one of them.

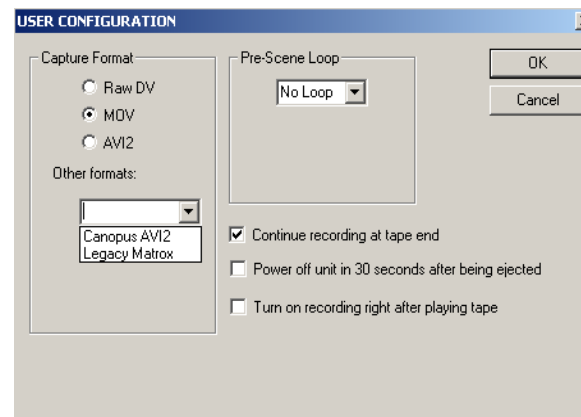
There are two user-definable formats available, which are "Canopus AVI2" and "Legacy Matrox".

Note: Choose AVI2 for most of the Matrox editing software user. Do not choose "Legacy Matrox" format only if it is specified by the manufacturer.

The "**Pre-Scene Loop**" function will display how many seconds user wants to choose. If it's blanked out, such function is not supported by this hardware. Up to 6 seconds is allowed for FW1256H model for DV capturing. Such function is temporarily disabled for HDV capturing.

The "**Continue record at tape end**" is "checked" as a default setting. Un-checking this item will force the CitiDISK HDV unit to stop recording at tape end.

The "**Power off**" is not checked as default setting. Checking this item will automatically turn off the unit 30 seconds after being ejected from the computer or after being left un-connected to the camera or computer.



## Modifying Device Configuration Setting

8). Click on the **"Modify device configuration setting"** button. Make sure the Hardware ID shown is "Fw1256H" and Product ID is "Shining CitiDISK HDV".

The configuration setting comes preset and there is usually no need to change it except the "User Config" sub-menu.

Configuration ROM Editor

ID / Version Information

Chip ID: 01 111000

Vendor ID: 0030E0 Hardware Version: 0F911

Common Text Strings

Manufacturer: Shining Technology, Inc.

Hardware ID: Fw1256H

Master Configuration:

Product ID: Shining CitiDISK HDV

Master Device Type: (unknown)

Slave Configuration:

Product ID:

Slave Device Type:

Buttons: Upload, Cancel, Import File..., Save Default, User Config, Advanced...

Click on **"User Config"** will display the next screen.

## Camera Controlled Recording



- Set the camera to "Camera" mode; insert a non-blank tape to camera.
- Press "REC" button of the camera once to start recording. The **RED** light of the CitiDISK HDV will turn to solid **RED**, blinking means signal is not delivered yet; and the "PowerAccess" light will change to color **PURPLE** in active recording.
- Press the "REC" button of the camera once again to stop recording. The **RED** light goes off and the "PowerAccess" light turns solid **BLUE**.
- Unintentionally power off the unit while in recording will trigger the unit to close current recording video, next to power off the unit.
- Each start & stop will generate one clip in the "Media" folder, named as "CLIPXXYY.ZZZ" or "CLPXXYY.ZZZ". If the recording is longer than 9-minute, one or more new sub-clip(s) will be created. The "XXX" is clip number, "YY" is the sub-clip number and "ZZZ" is the file extension name.

**Note:** To allow the CitiDISK HDV to completely close just recorded video, a 3-second gap before next recording started is compulsory.

## Recording Video Manually



- Set the HDV camera to "Camera" mode.
- Press "REC" button on the CitiDISK HDV once to start recording. The **RED** light of the CitiDISK HDV will turn to solid **RED**, blinking means signal is not delivered yet; and the "PowerAccess" light will change to color **PURPLE** in active recording.
- Press the "REC" button of the CitiDISK HDV once again to stop recording. The **RED** light goes off and the "PowerAccess" light turns solid **BLUE**.

## Recording Tape Video



- Set the camera to "VCR" mode. Insert a tape.
- Play the tape content.
- Press the "REC" light on the CitiDISK HDV. The **RED** light blinks and the CitiDISK HDV waits to be fed.
- The **RED** light of the CitiDISK HDV changes to solid **RED** indicating recording is in progress, and the "PowerAccess" light changes color between **BLUE** and light **PURPLE**.
- Stop DV recording by pressing the "REC" button of the CitiDISK HDV and then stop tape playing. The **RED** light goes off and the "PowerAccess" light turns solid **BLUE**.

## External FireWire Hard Disk Before Editing

- Disconnect the FireWire cable from the camcorder and re-connect it to a FireWire port (4-pin or 6-pin type) equipped computer, PC or Mac.
- The CitiDISK HDV appears as an external FireWire hard disk in desktop( Mac ) or "My Computer" folder ( PC ) for file archiving, backing-up and/or other video editing functions. For PC user, it is also recommended having a "File system integrity check" every time connecting the CitiDISK HDV to the computer by selecting the drive icon in "MyComputer" folder, right-mouse click it, select "Properties", select "Tools", click "Check now", check "Automatically fix file system errors" and click "Start" function. The whole process may be long depends on the quantity of the information stored in the CitiDISK HDV for the first time.
- CitiDISK HDV is PLUG-and-PLAY specification compliant; no driver is needed.

Note: Manufacturer recommends user copy/paste all the captured clips in "Media" folder to an internal/second hard disk before editing. Although dragging unwanted video clips into "Recycle Bin" and emptying the Recycle Bin will re-claim your hard disk space, but the directory holding the clip names will not. Manufacturer also recommends use either "QuickErase" function to erase the entire "Media" folder's contents or use the Shining Utility program to re-format the unit prior to next video capturing project.

## Quick Erase Function

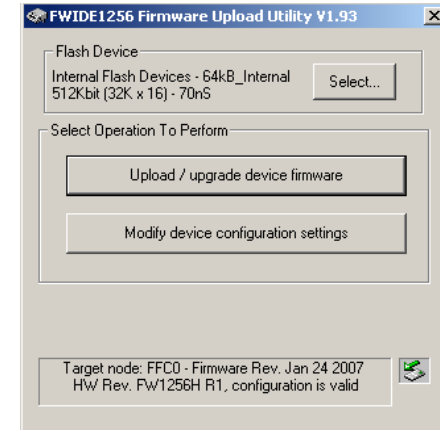
- Connect the FireWire cable (4-pin end) to the camera's iLink port.
- Connect the FireWire cable (6-pin end) to the CitiDISK HDV and set the camera to either "Camera" or "VCR" mode.
- Use a pencil or hard sharp object firmly press and hold the button( right on the top of blue charging light ) for more than 5 seconds.
- Release the "QuickErase" button.
- The power-access light will change color between **PURPLE** and **BLUE** for up to 2 minutes depends on how many clips stored in "Media" folder.
- User must wait till the "PowerAccess" stop changing color to **PURPLE**, in other words -- in solid **BLUE** for over 5 seconds, then power off the unit.



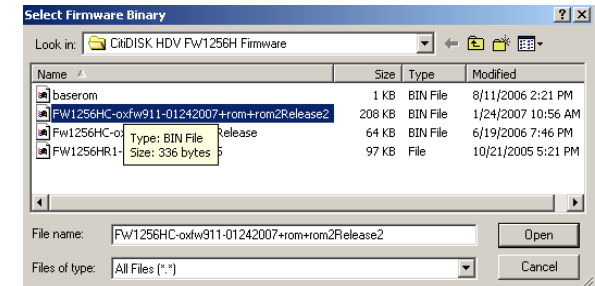
**Note:** All of the files inside the "Media" folder are subject to be erased. Manufacturer suggests that you back up the clips to an internal hard disk first and "Quick Erase" the entire folder's contents before next video capturing project.

P8

Shining Technology CitiDISK HDV Quick Usage Guide v11.0



7). Click on the "**Upload / Upgrade Device Firmware**" button. Follow the instructions and the system will ask for the firmware target.



Click on the file named as "FW1256H-oxfw911-mmdd2007Release" as the example shown above with the "Binary" or "bin" file extension. Click on "Open" to continue. Once the upload process is finished( "Ready" status shows up ), the CitiDISK HDV will re-synchronize itself to the system and **GREEN** lights will turn on and stay solid.

P13

Shining Technology CitiDISK HDV Quick Usage Guide v11.0

## Updating the CitiDISK HDV Firmware

**Proceed following steps with caution and do not un-plug the CitiDISK HDV's power while in operation, neither exiting the program prematurely; otherwise the firmware could be damaged.**

- 1) Uninstall the previous version of Uploader and install the latest "Firmware Uploader". The firmware uploader can be found in the CD included or downloaded from <http://www.shining.com>, "Download & Support" page, "CitiDISK HDV/DV" section.
- 2) Connect the CitiDISK HDV to your computer (Windows System only) with the FireWire cable.
- 3) Turn on the CitiDISK HDV. Wait for about 20 seconds.
- 4) Click on the "Safe to remove" icon at the bottom right corner of the tool bar. Select the disk drive that you wish to eject.

Stop Shining Technology\_Inc. Shining DV IDE Devices IEEE 1394 SBP2 Device - Drive(G:)

The message illustrated below will appear; click on "OK" to continue.



- 5) Do NOT disconnect the FireWire cable from the system. Leave the CitiDISK HDV power on. Wait for another 20 seconds till the CitiDISK HDV re-synchronizes itself to the system - the "GREEN" light is on and not blinking.
- 6) Double-click the "CitiDISK HDV firmware uploader" icon on the desktop to launch the program. The first window of the Firmware Upload will pop up. The top text window displays the Uploader version number, e.g. "v1.93x". Current installed firmware date code and the HW Rev is "FW1256H R1" will be both displayed in the bottom text window.

## Quick Play Last Captured Clip



- Set the camera to "VCR" mode.
- Toggle the middle "QPLAY" button once to play the last captured clip; subsequently, the "QPLAY" light turns solid ORANGE when playing.
- Toggle "QPLAY" button once to stop playing immediately or wait till the clip is played to the end.
- The "QPLAY" light turns off.

**Note:** As the time of this Quick Usage Guide released, the CitiDISK HDV does not support the QPLAY neither the PLAYALL functions to viewfinder for HDV. User will be able to download the Firmware Uploader and firmware to update when released.

## Play All Captured Clips



Jump Forward




Jump Backward

- Set the camera to "VCR" mode.
- Press and hold the middle "QPLAY" button for over 3 seconds and the ORANGE light will start to blink.  
The last captured clip will play first; then it loop play from the first recorded clip of the "Media" folder. Additional clips will play in the sequence they were captured.  
You can reverse the order of the playback sequence by toggling the "REC" button once. The "RED" light blinks if reverse direction is selected. Press the "REC" button again to reset to the normal order.
- Toggle the middle ORANGE button once to abort playing the current clip and to jump forward to the next clip (Only if "RED" light is off). It jumps backward if "RED" light is blinking.
- Press and hold the middle ORANGE button for over 3 seconds to stop the "PlayAll" function.

**Note:** Each camera implements different length of buffer while playing back the clip to viewfinder, jumping in "forward" clip or in "backward" clip may take 4-5 seconds to be effective.

## Choosing Favorable DV Video File Format

Operate the following steps only when the external power adapter is plugged into the unit and it is NOT connected to a computer neither a camera. DO NOT turn off the unit before the programming sequence is completed (PWR, QPLAY & REC lights blink at the same time).

1. Set eyes on the front panel of the CitiDISK HDV. 
2. Turn on the power of the CitiDISK HDV. Wait until all three lights (PWR, QPLAY & REC) start to blink.
3. Press and hold the "REC" button for over 5 seconds. Current stored file format will be displayed as one of the light combinations illustrated below.













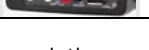
Raw DV (Clipxyy.dv)		Windows AVI2 (Clipxyy.avi)	
QuickTime MOV (Clipxyy.mov)		User Defined **	

- \*\* Refer to the user manual's "How to customize User Defined file format" section.
4. For example, if the stored setting is "QuickTime", only the "RED" light will be turned on. User is now able to toggle the "REC" button once to advance to next light combination from "QuickTime" -> "AVI2" -> "User Defined" -> "RawDV" and rotates back to "QuickTime" again.
  5. Once the file format( combination ) is determined, stop toggling and wait for 10-second window to expire. Both "GREEN" & "RED" lights will go off and stay off for 3 seconds.
  6. Next, the CitiDISK HDV will write the new file format to internal memory. Both "GREEN" & "RED" lights will blink rapidly for approximate 10 seconds during the writing process.
  7. Once the file format writing process is finished, all three lights will blink normally meaning the writing process is successful. The CitiDISK HDV is now ready to capture video using the programmed file format. User MUST turn off the power before programming a new format again.

**Disclaimer:** As the time of this Quick Usage Guide released, MOV for HDV is not implemented. User is able to update the unit's firmware when QuickTime-HDV is released.

## DV Streams vs. Editing Software

The following table consists of various editing software's DV native file format and suggested key combination, but not for HDV.

Editing Software	DV Native File Format	Suggested Key Combination
Adobe Premiere Pro 2.0	Standard AVI2	
Apple Final Cut Pro 5.1.x in Mac OS X **	QuickTime MOV	
Apple iMovie3 on Mac OS X	QuickTime MOV	
Avid Xpress Pro 5.x	QuickTime MOV	
Canopus Edius 4	Canopus AVI2	
MacroSystem / Casablanca Standalone Editing Station	RawDV	
MainConcept EVE	RawDV	
Matrox Axio HD	Standard AVI2	
MGI( Roxio ) VideoWave	Standard AVI2	
Media100 Cinestream in MacOS	Standard AVI2	
Pinnacle Liquid Edition	Standard AVI2	
Sony Vega 6.x, 7.x	Standard AVI2	
Ulead Media Studio and Video Studio	Standard AVI2	

**Disclaimer:** As the time of this Quick Usage Guide released, the CitiDISK HDV's QuickTime-HDV supported is not implemented yet. The HDV signal is automatically detected and stored as M2T file irrelevantly to what DV file format setting done above. User must first convert the M2T file to QuickTime file before editing in Final Cut Pro 5.1.x. For rest of the editing systems, M2T file is ready to edit/import if HDV is clearly supported by that editing software. User is able to update the unit's firmware when QuickTime-HDV is released.